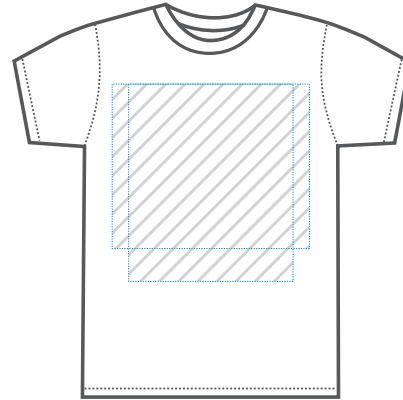
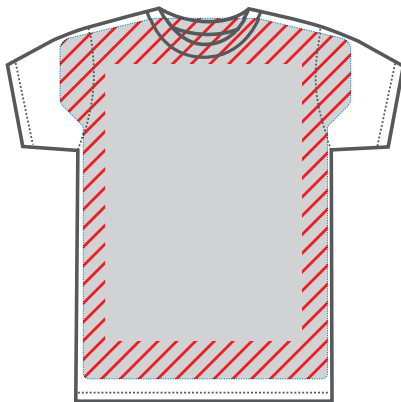


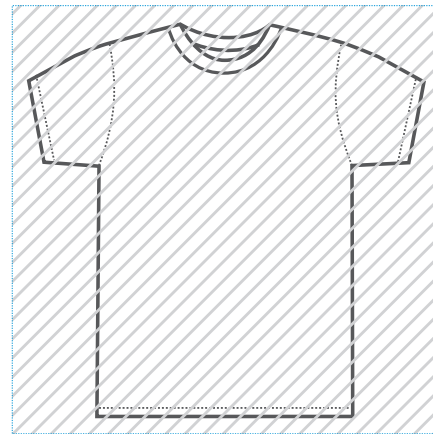
STANDARD



OVERSIZE



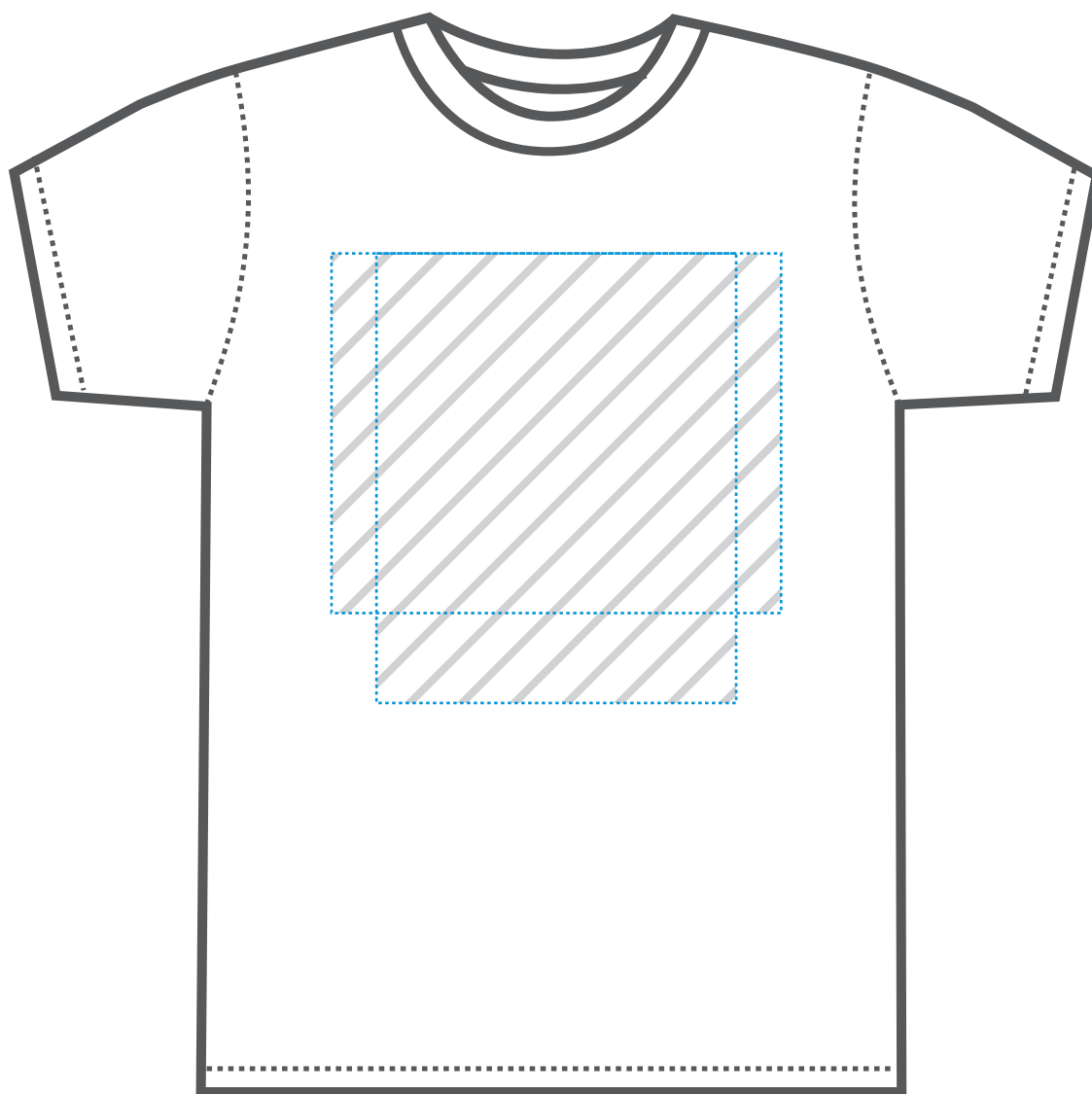
ALL OVER



BELT



STANDARD



**SIZE APPROXIMATION BASED ON A SIZE LARGE T-SHIRT*

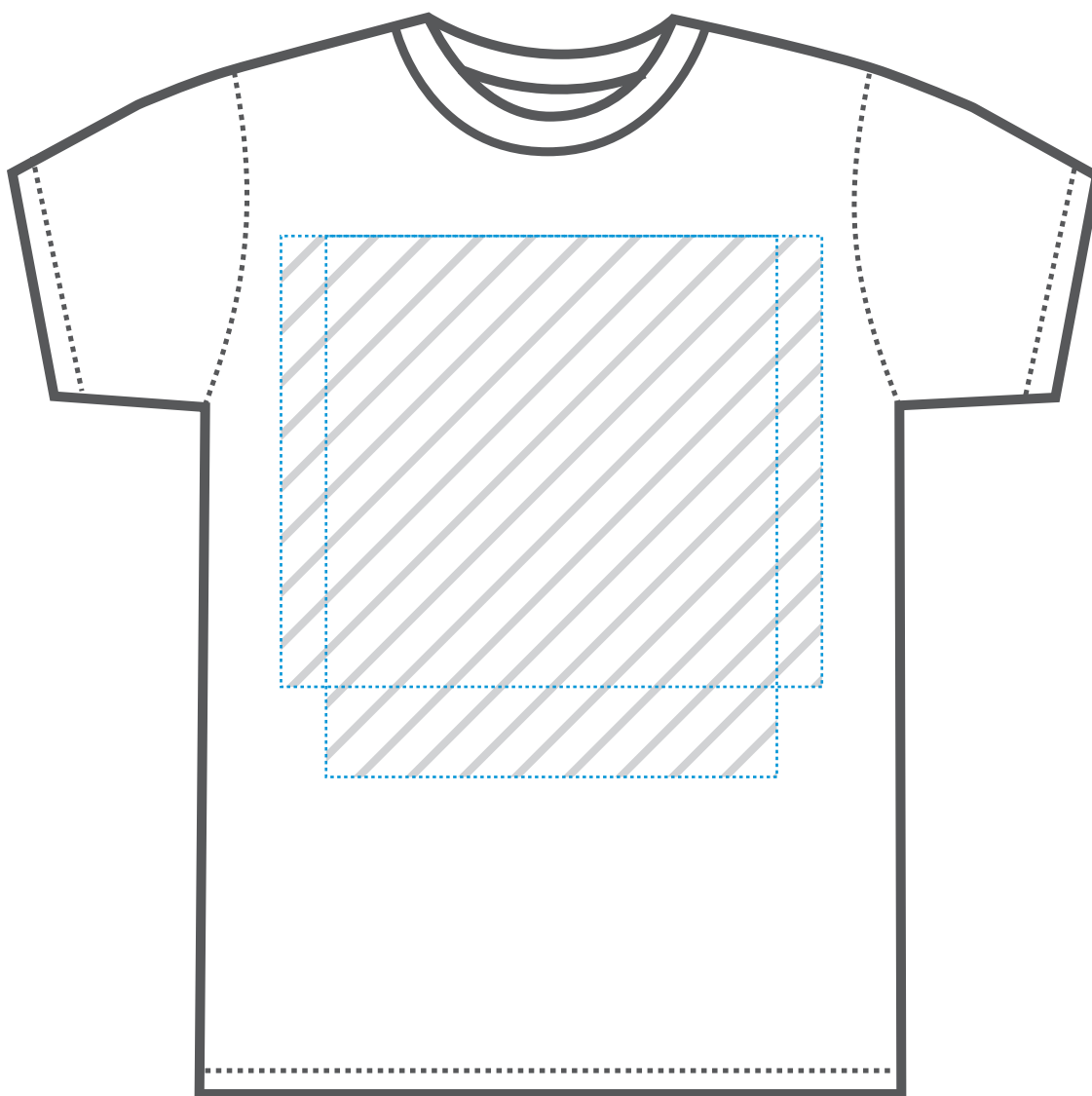
MAXIMUM IMPRINT SIZE: 12"W x 15"L or 15"W x 12"L

PLACEMENT: Center Chest, 3" from bottom of collar

DISCLAIMER: PXP will use Standard Placement as a default. Deviation from standard placement may occur depending on the size and shape of graphic and/or size and style of garment. If specific placement is desired, please specify exact placement in your art file and P.O.



OVERSIZED



*SIZE APPROXIMATION BASED ON A SIZE LARGE T-SHIRT

MAXIMUM IMPRINT SIZE: 18"W x 15"L or 15"W x 18"L

PLACEMENT: Center Chest, 3" from bottom of collar

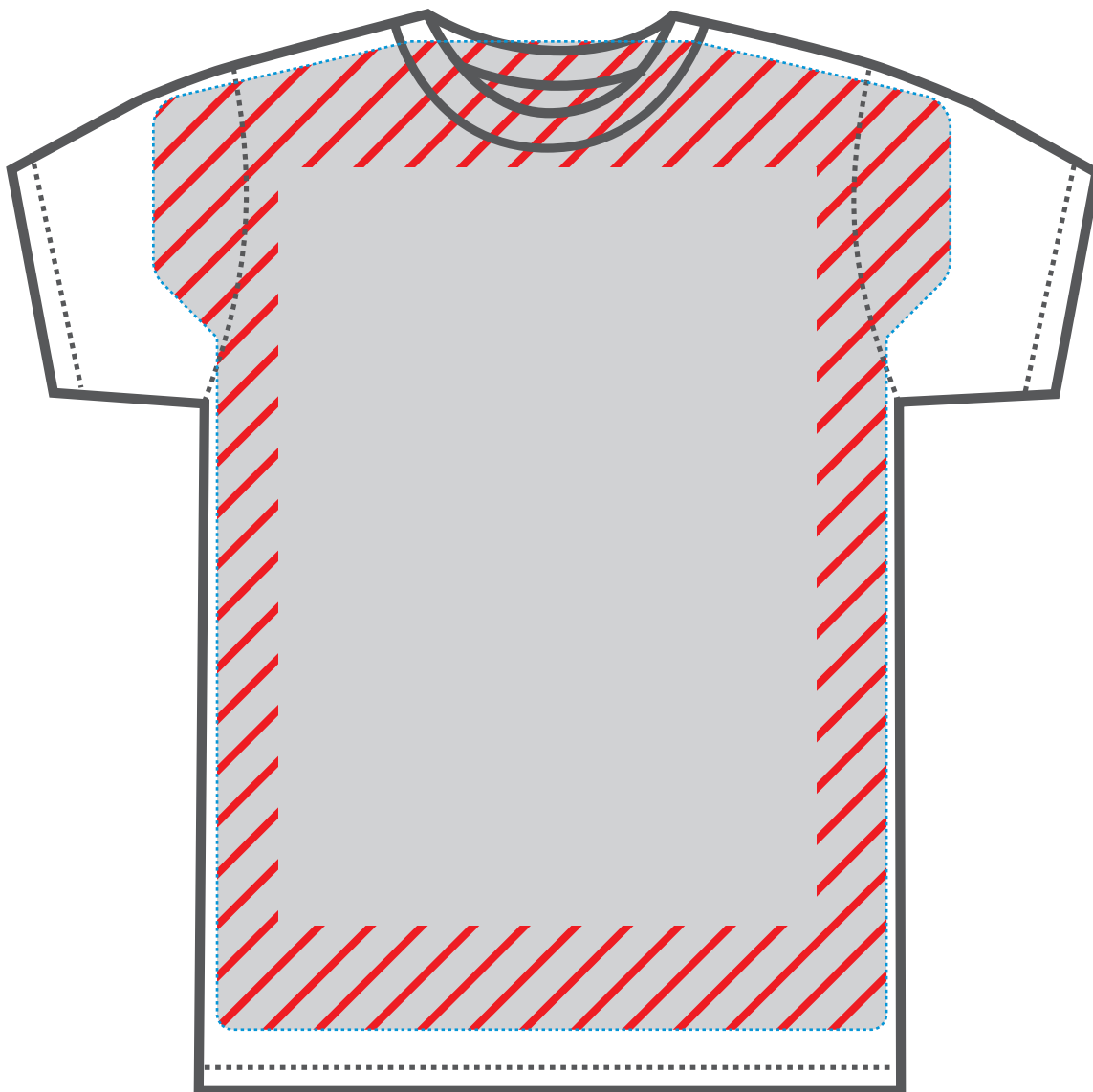
DISCLAIMER:

Oversized Plastisol: 15"x18" (note that print can NOT go wider than 15").

Oversized Water Base: 15"x18" OR 18"x15". The print can go over the collar and/or sleeves but can NOT be dictated to hit the sleeves or not hit the sleeves. Variances will occur and cannot be controlled when going wider than 15".



ALL OVER



**SIZE APPROXIMATION BASED ON A SIZE LARGE T-SHIRT*

//// = PROBLEMATIC AREAS

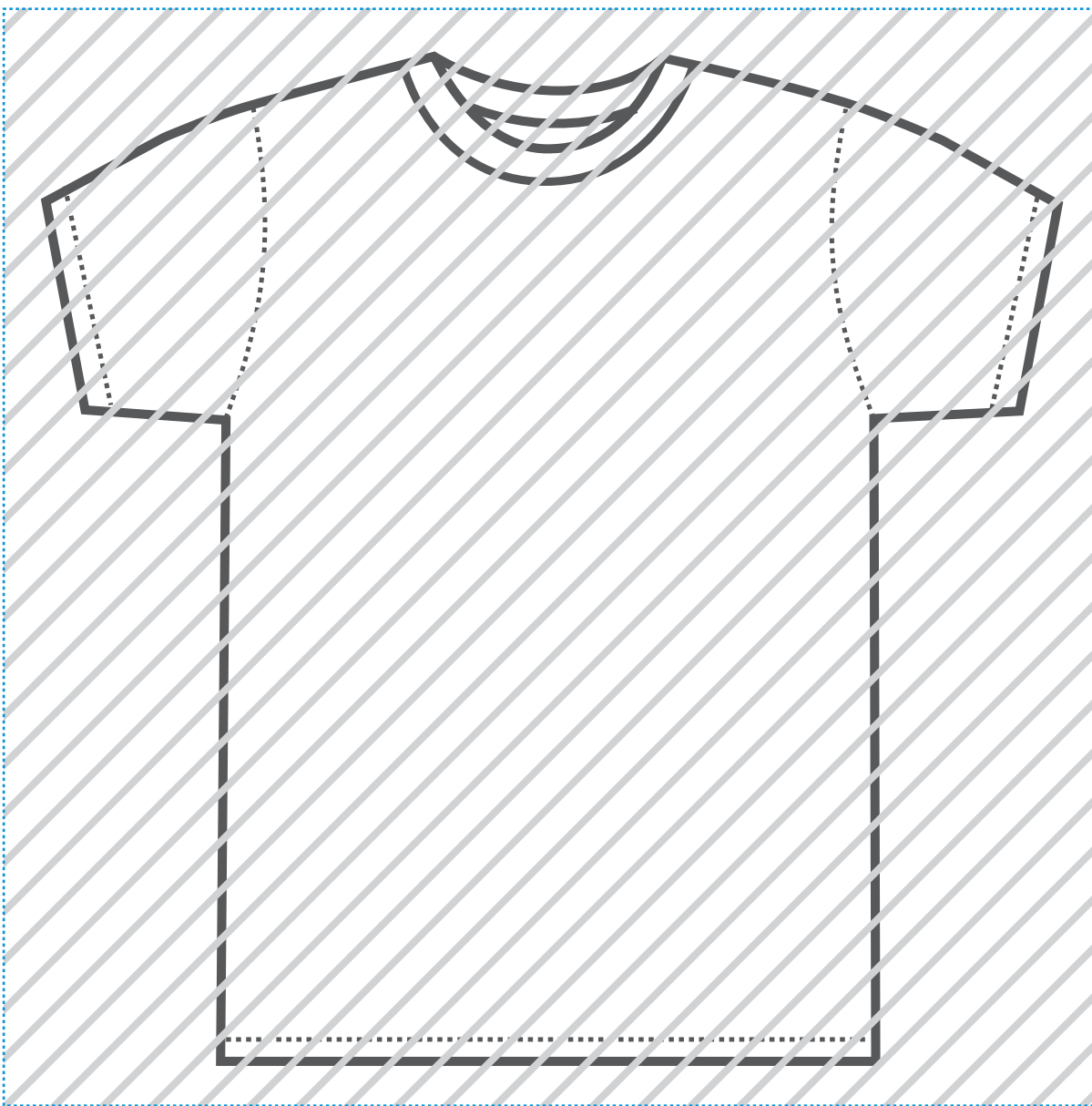
MAXIMUM IMPRINT SIZE: 25"W x 30"L

PLACEMENT: Center Chest, 3" from bottom of collar

REQUIREMENTS: All-Over prints must be printed with **ONLY** waterbase inks, and **CANNOT** use size small shirts due to a very high reject rate.

DISCLAIMER: PXP will use Standard Placement as a default. Deviation from standard placement may occur depending on the size and shape of graphic and/or size and style of garment. If specific placement is desired, please specify exact placement in your art file and P.O.

BELT



**SIZE APPROXIMATION BASED ON A SIZE LARGE T-SHIRT*

MAXIMUM IMPRINT SIZE: 39"W x 39"L

PLACEMENT: Full surface area of most shirt sizes up to 39" wide or tall.

DISCLAIMER: PXP will use Standard Placement as a default. Deviation from standard placement may occur depending on the size and shape of graphic and/or size and style of garment. If specific placement is desired, please specify exact placement in your art file and P.O.